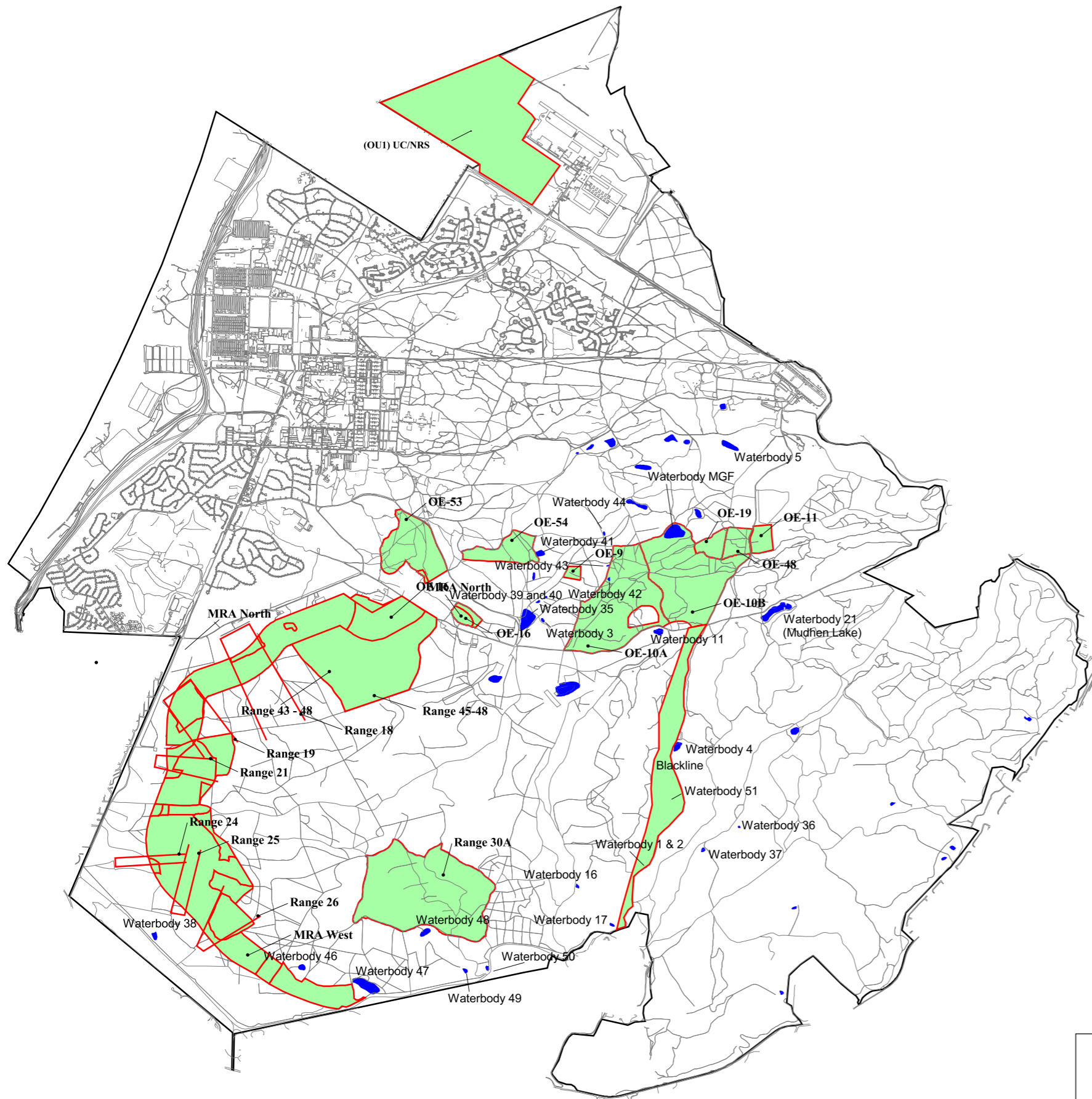



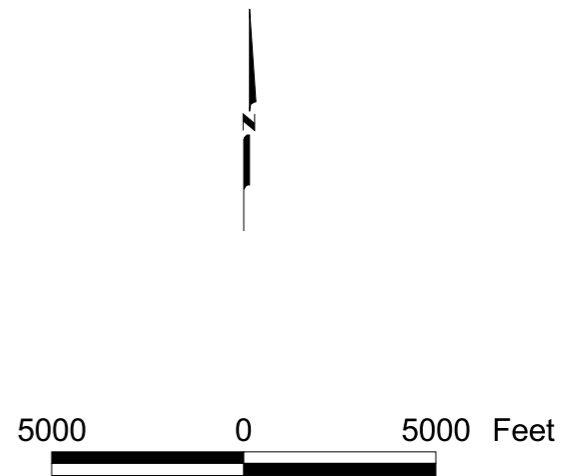


PLATES



- EXPLANATION**
-  Roads
 -  Previous Monitoring/ Survey Sites (1994 - 2001)
 -  Freshwater Marsh, Ponds, or Vernal Ponds

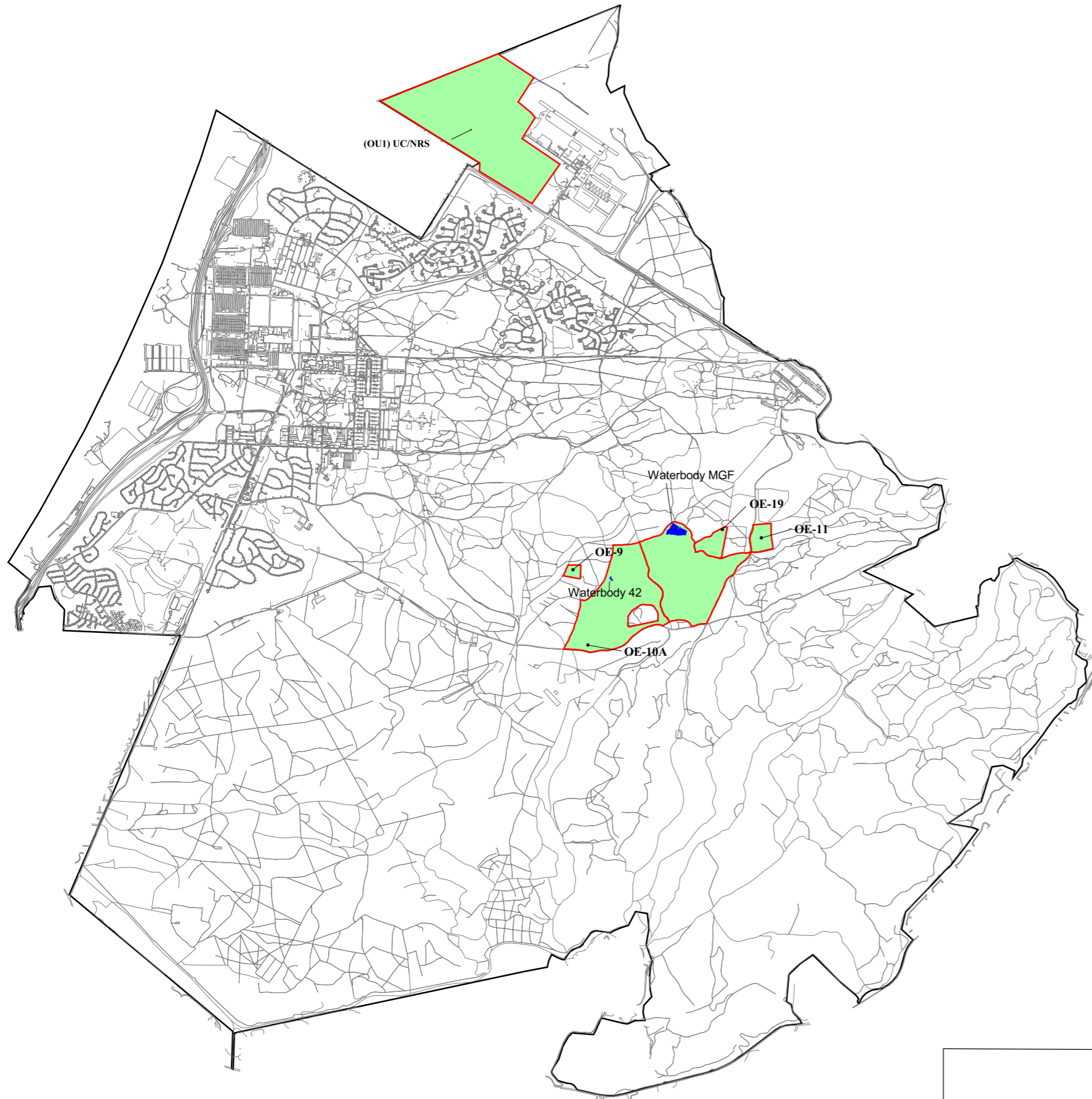





**Habitat Monitoring Activities
Previously Conducted (1994 - 2001)**
Former Fort Ord
Monterey County, California

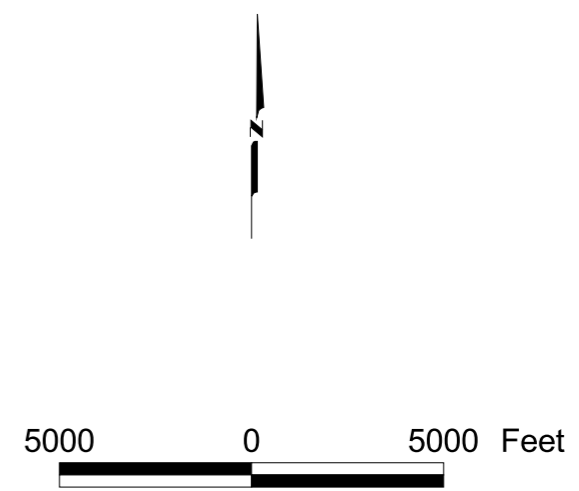
PLATE
1

DRAWN	JOB NUMBER	APPROVED	DATE	REVISED DATE
JCB	55074 00171	JS	11/2002	

Fort_Ord_GIS - Flora - biohab99.apr - Plate 1- prev 2002 Habitat Mont layout



- EXPLANATION**
-  Roads
 -  Chaparral Monitoring Sites (2002)
 -  Wetland Monitoring (2002)

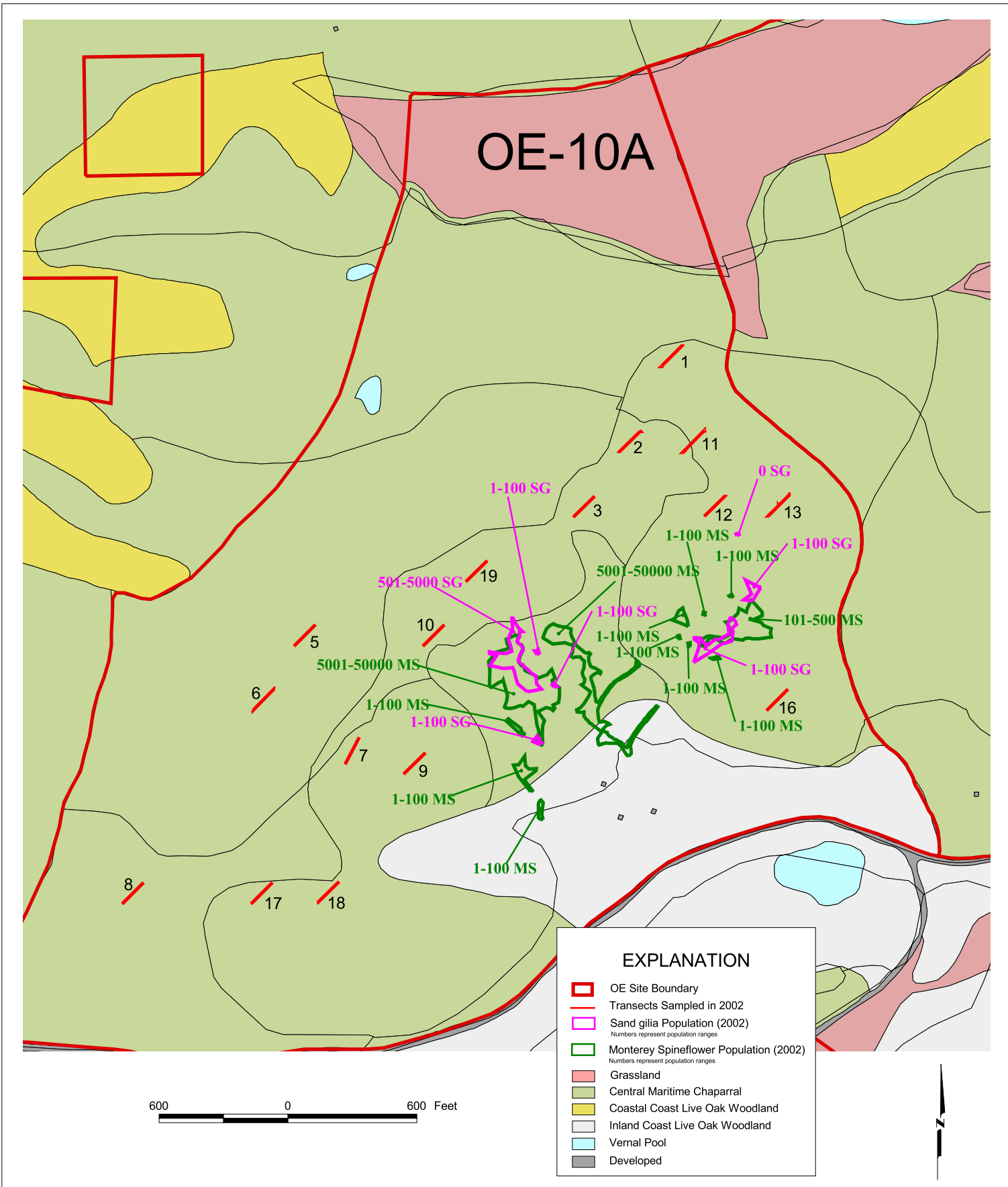


2002 Habitat Monitoring Sites
 Work Plan - Biological Monitoring Services
 Former Fort Ord
 Monterey County, California

PLATE
2

DRAWN	JOB NUMBER	APPROVED	DATE	REVISED DATE
JCB	55074 00171	JS	10/2002	

Fort_Ord_GIS - Flora - bichab99.apr - Plate 2 - 2002 Chaparral Sites Layout



Fort Ord GIS - Flora - oechaparral.apr - 10A 2002 layout - 11/25/02



Central Maritime Chaparral Monitoring and HMP
Annual Species Sampling - OE-10A
 2002 Annual Monitoring Report
 Former Fort Ord
 Monterey County, California

PLATE

3

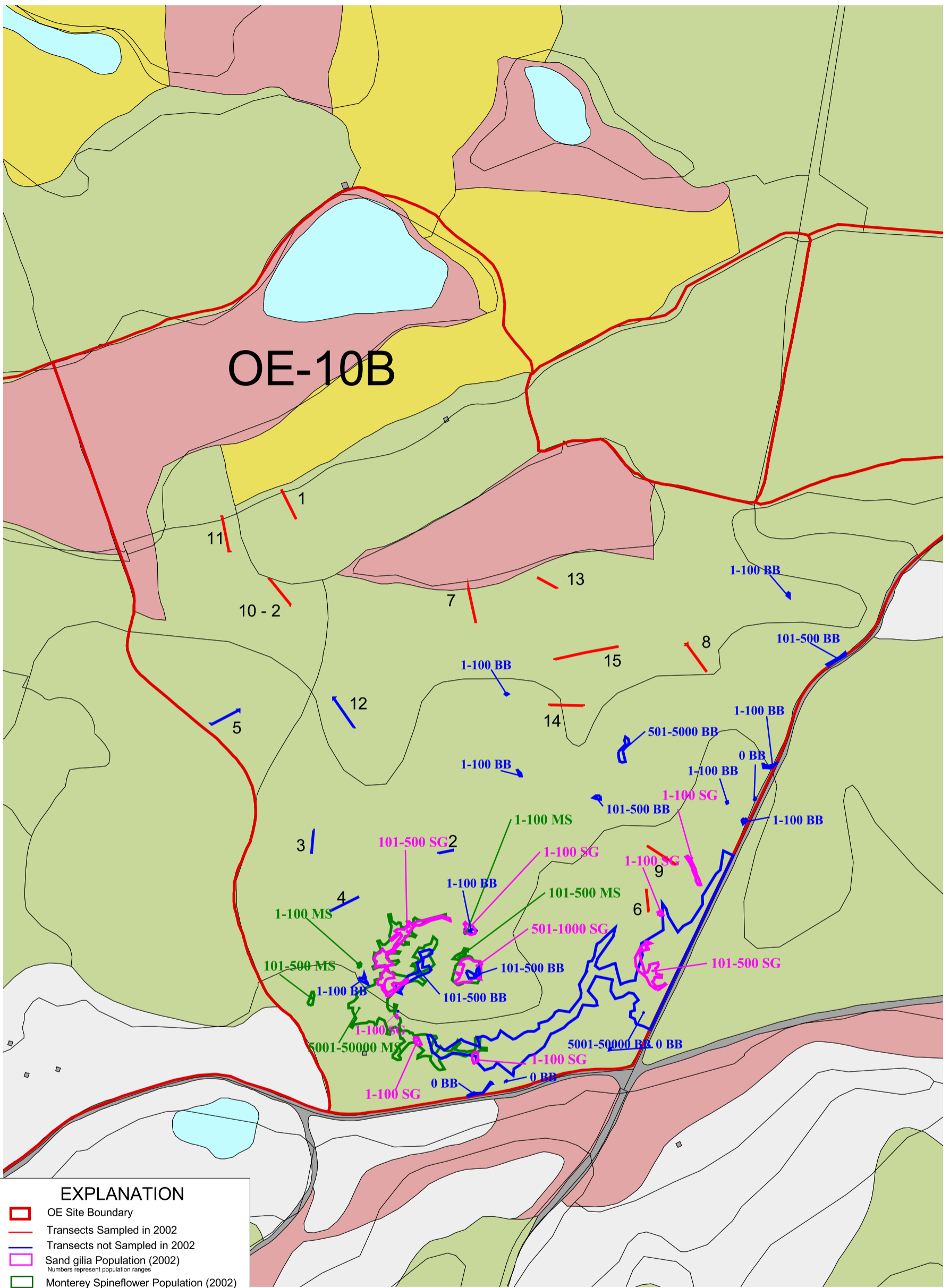
DRAWN
JCB

JOB NUMBER
55674 00171

APPROVED

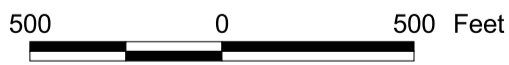
DATE
11/02

REVISED DATE



EXPLANATION

- ▬ OE Site Boundary
- ▬ Transects Sampled in 2002
- ▬ Transects not Sampled in 2002
- ▬ Sand gilia Population (2002)
Numbers represent population ranges
- ▬ Monterey Spineflower Population (2002)
Numbers represent population ranges
- ▬ Seaside Birdsbeak Population (2002)
Numbers represent population ranges
- ▭ Grassland
- ▭ Central Maritime Chaparral
- ▭ Coastal Coast Live Oak Woodland
- ▭ Inland Coast Live Oak Woodland
- ▭ Vernal Pool
- ▭ Developed



Fort Ord GIS - Flora - oechaparral.apr - 10B 2002 layout - 11/25/02



Central Maritime Chaparral Monitoring and HMP
Annual Species Sampling - OE-10B
 2002 Annual Monitoring Report
 Former Fort Ord
 Monterey County, California

PLATE

4

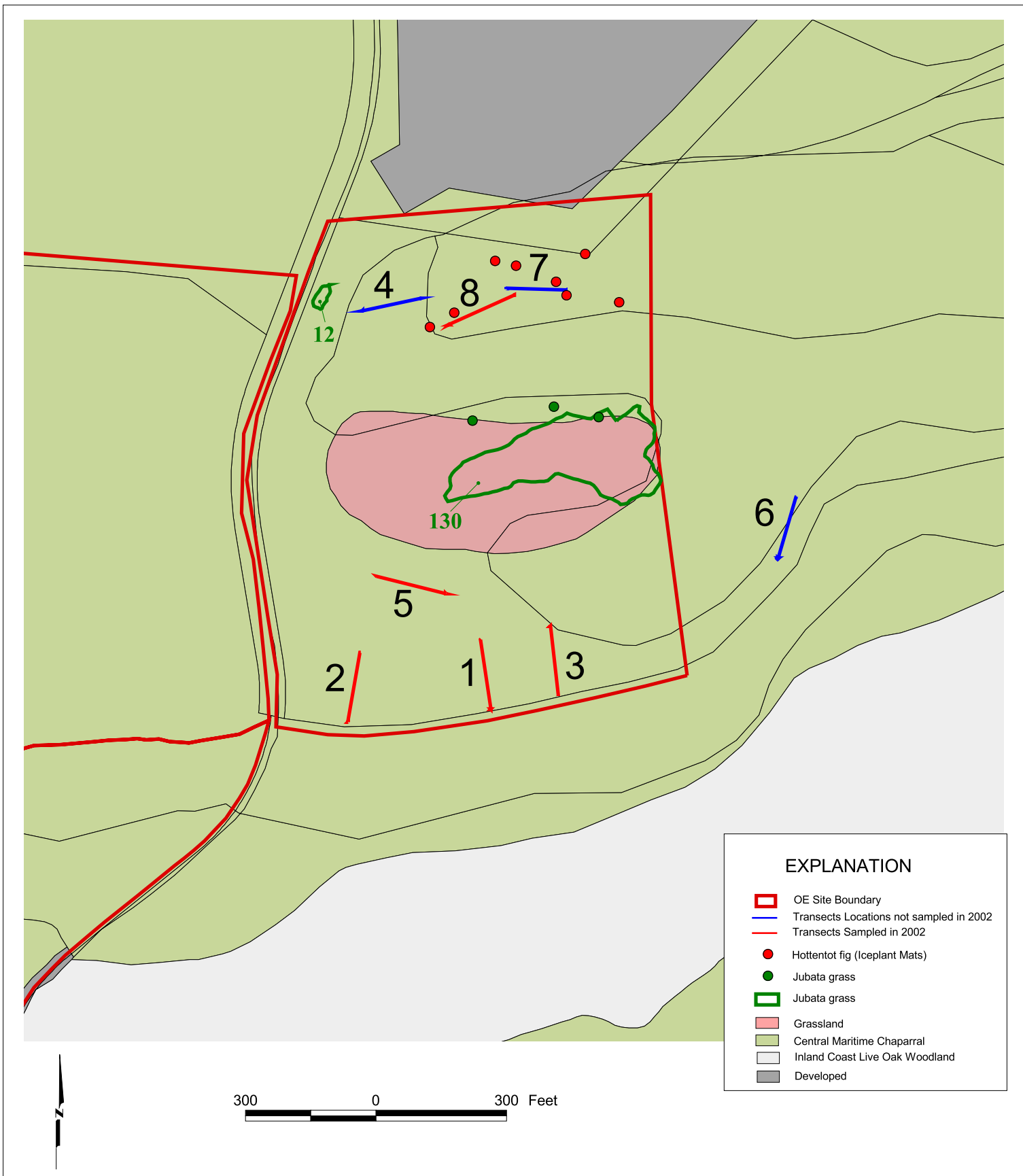
DRAWN
JCB

JOB NUMBER
55674 00171

APPROVED

DATE
11/02

REVISED DATE



EXPLANATION	
	OE Site Boundary
	Transects Locations not sampled in 2002
	Transects Sampled in 2002
	Hottentot fig (Iceplant Mats)
	Jubata grass
	Jubata grass
	Grassland
	Central Maritime Chaparral
	Inland Coast Live Oak Woodland
	Developed

Fort Ord GIS - Flora - oechaparral.apr - OE 11 2002 layout - 11/26/02



Central Maritime Chaparral Monitoring, HMP
Annual Species Sampling and Exotic Species Surveys- OE-11
 2002 Annual Monitoring Report
 Former Fort Ord
 Monterey County, California

PLATE

5

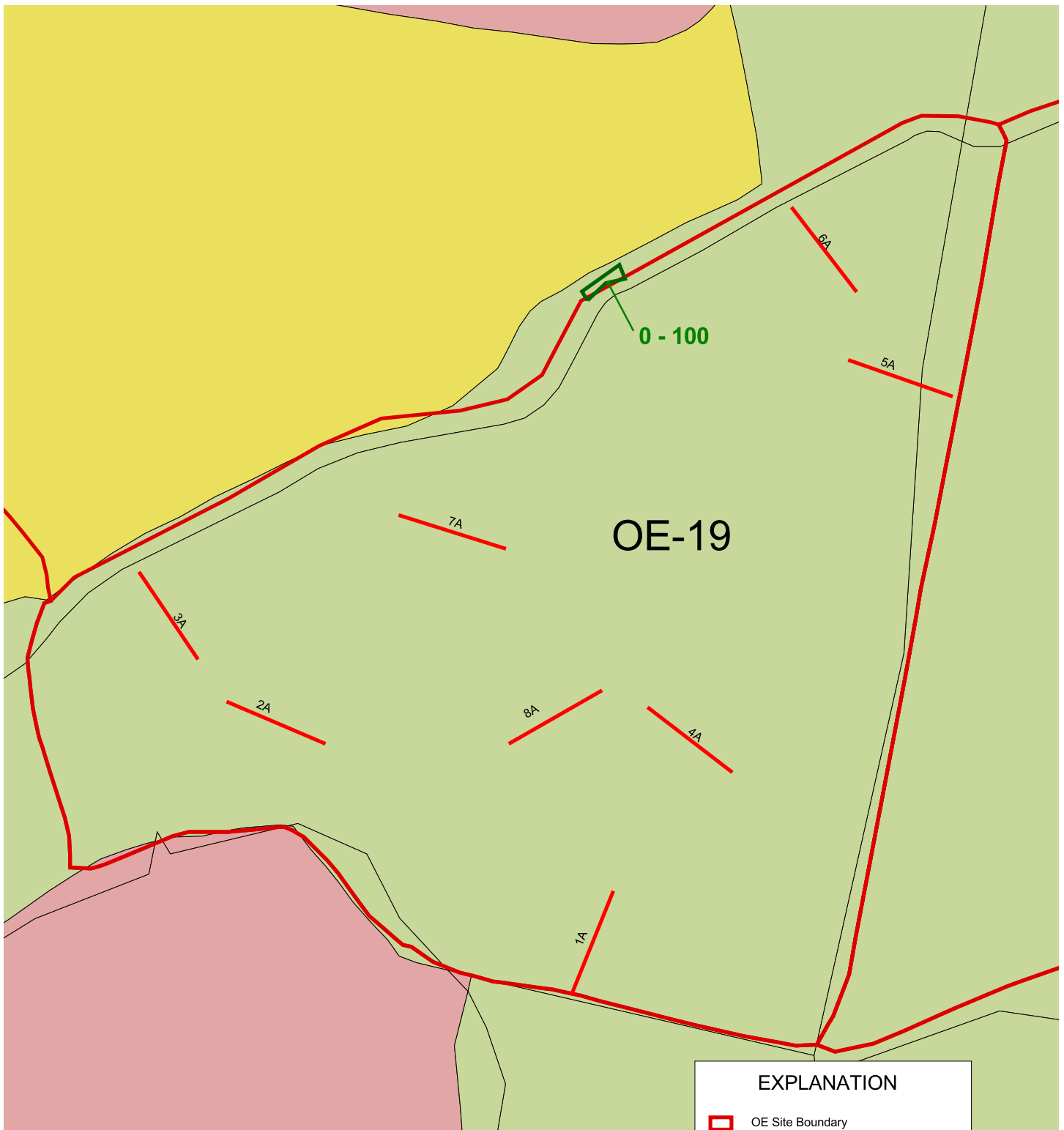
DRAWN
JCB

JOB NUMBER
55074 00171

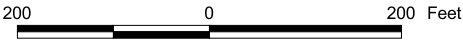
APPROVED

DATE
11/02

REVISED DATE



EXPLANATION	
	OE Site Boundary
	Transects Sampled in 2002
	Monterey Spineflower Population (2002) <small>Numbers represent population ranges</small>
	Grassland
	Central Maritime Chaparral
	Coastal Coast Live Oak Woodland



Transect provided by BLM are approximately located without the use of GPS

Fort Ord GIS - Flora - oechaparral.apr - OE-19 2002 layout - 11/26/02



Central Maritime Chaparral Monitoring, HMP
Annual Species Sampling - OE-19
 2002 Annual Monitoring Report
 Former Fort Ord
 Monterey County, California

PLATE

6

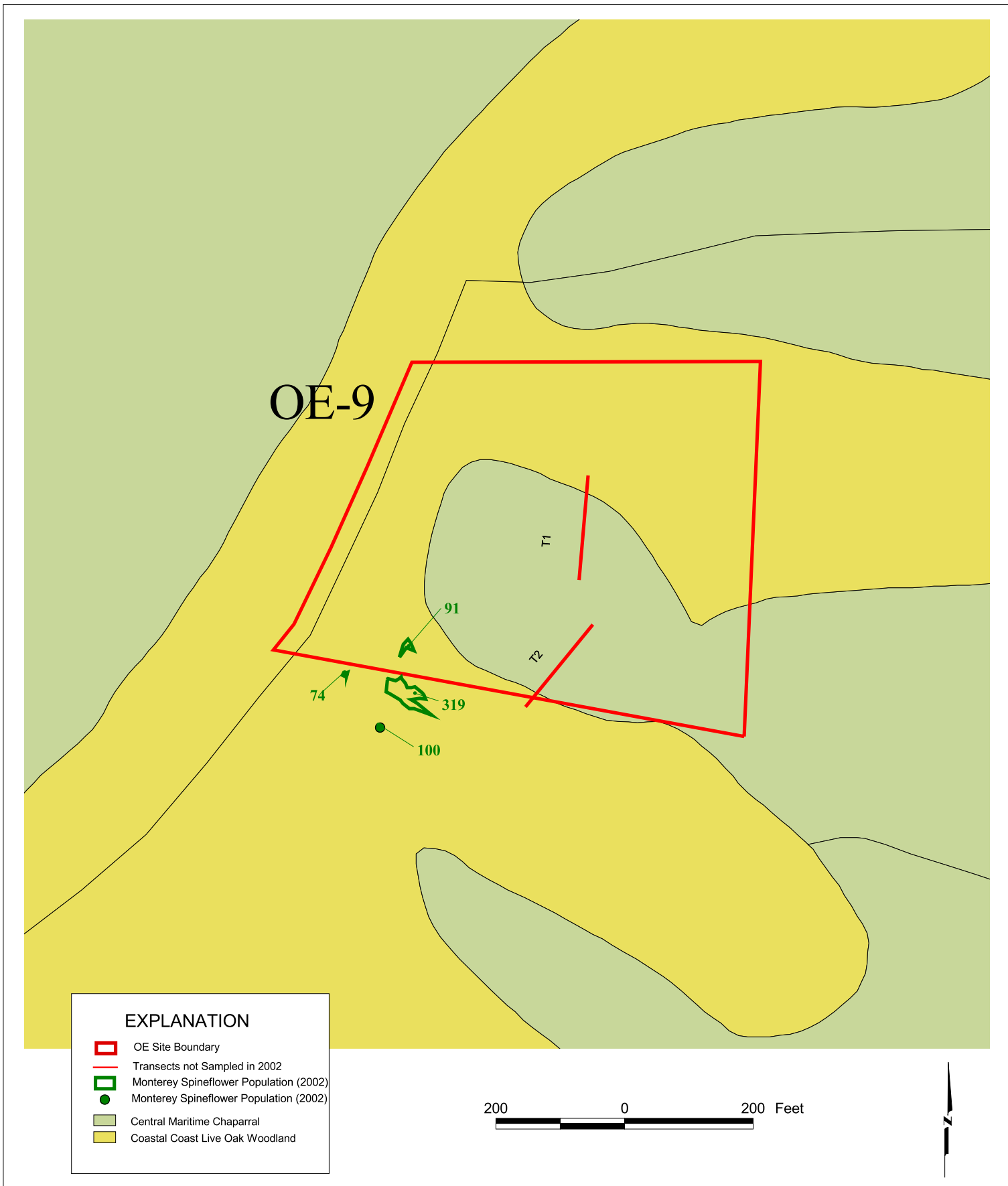
DRAWN
JCB

JOB NUMBER
55074 00171

APPROVED

DATE
11/02

REVISED DATE



EXPLANATION

- ▭ OE Site Boundary
- Transects not Sampled in 2002
- ▭ Monterey Spineflower Population (2002)
- Monterey Spineflower Population (2002)
- ▭ Central Maritime Chaparral
- ▭ Coastal Coast Live Oak Woodland

Fort Ord GIS - Flora - oechaparral.apr - OE9 2002 layout - 11/26/02



HMP Annual Species Sampling - OE-9
 2002 Annual Monitoring Report
 Former Fort Ord
 Monterey County, California

PLATE

7

DRAWN
JCB

JOB NUMBER
55074 00171

APPROVED

DATE
11/02

REVISED DATE

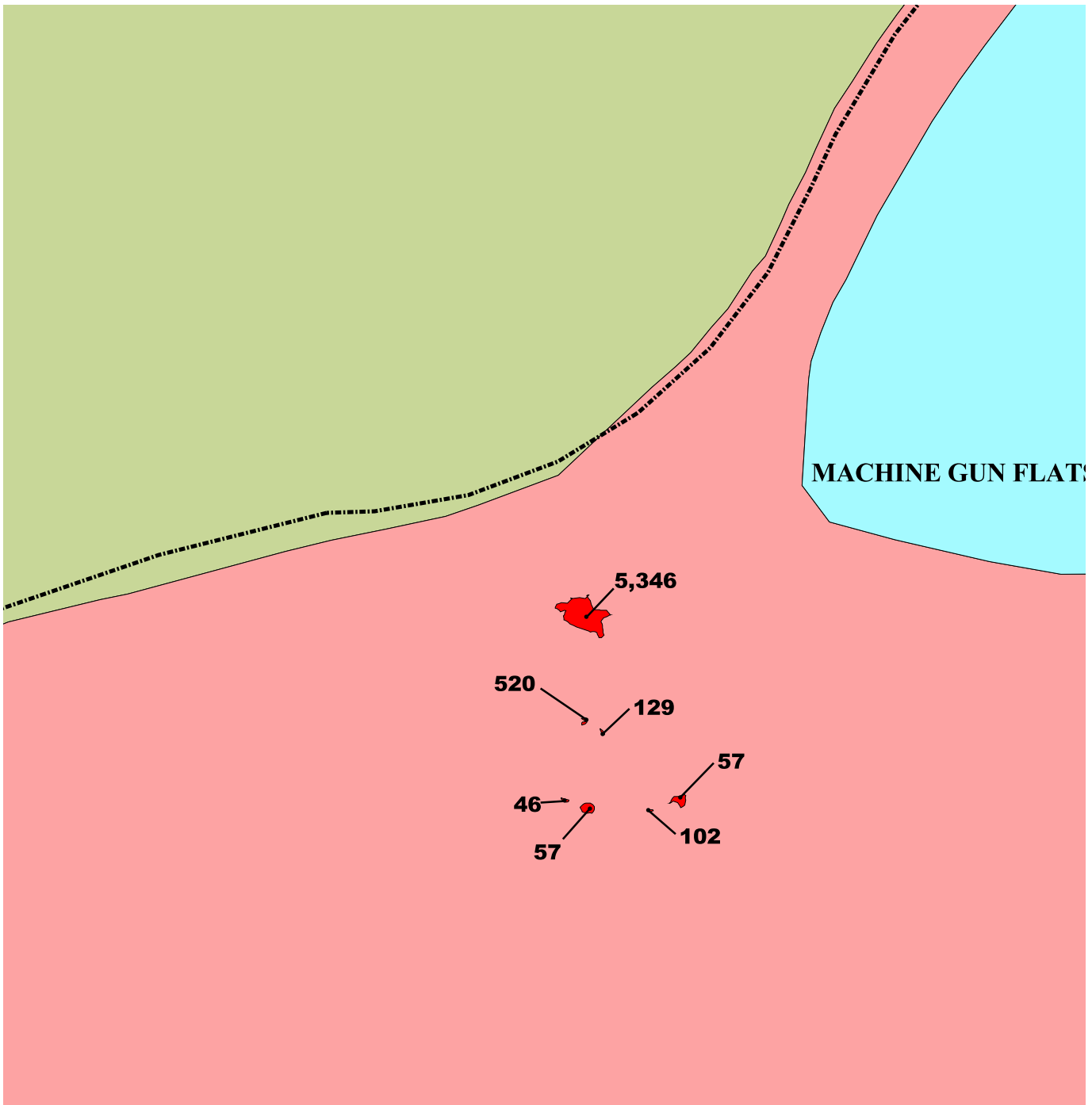


Explanation

- Monterey Spineflower (MS) Populations
- Sand Gilia (SG) Populations
- SG and MS Populations
- Approved Access Routes



**HMP Annual Species Populations on
Groundwater Remediation Access Roads - UC/NRS**
2002 Annual Monitoring Report
Former Fort Ord
Monterey County, California



EXPLANATION

- Unpaved Roads
- Contra Costa Goldfields Populations
- Contra Costa Goldfields Populations
- Grassland
- Central Maritime Chaparral
- Vernal Pool



Fort_Ord_GIS - Fora - veg.apr - MGF Goldfields 2002 layout - 11/26/02



Contra Costa Goldfields Populations -
OE 10B Machine Gun Flats
 2002 Annual Monitoring Report
 Former Fort Ord
 Monterey County, California

PLATE

9

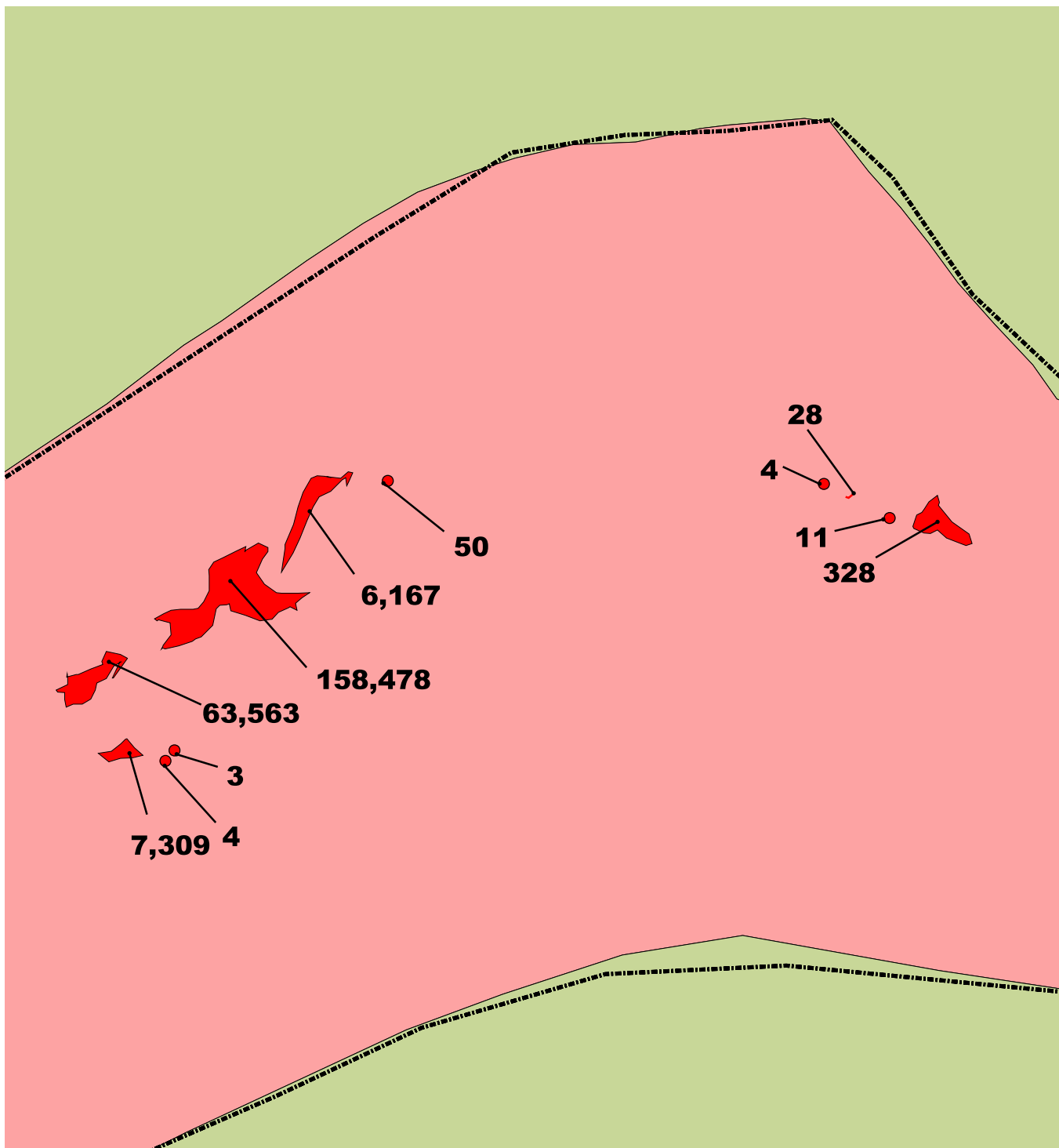
DRAWN
JCF

JOB NUMBER
55074 00121

APPROVED

DATE
11/02

REVISED DATE



EXPLANATION

- Unpaved Roads
- Contra Costa Goldfields Populations
- Contra Costa Goldfields Populations
- Grassland
- Central Maritime Chaparral



Fort_Ord_GIS - Fora - veg.apr - Mima Mounds 2002 layout - 11/26/02



Contra Costa Goldfield Populations -
OE 10B Mima Mounds
 2002 Annual Monitoring Report
 Former Fort Ord
 Monterey County, California

PLATE

10

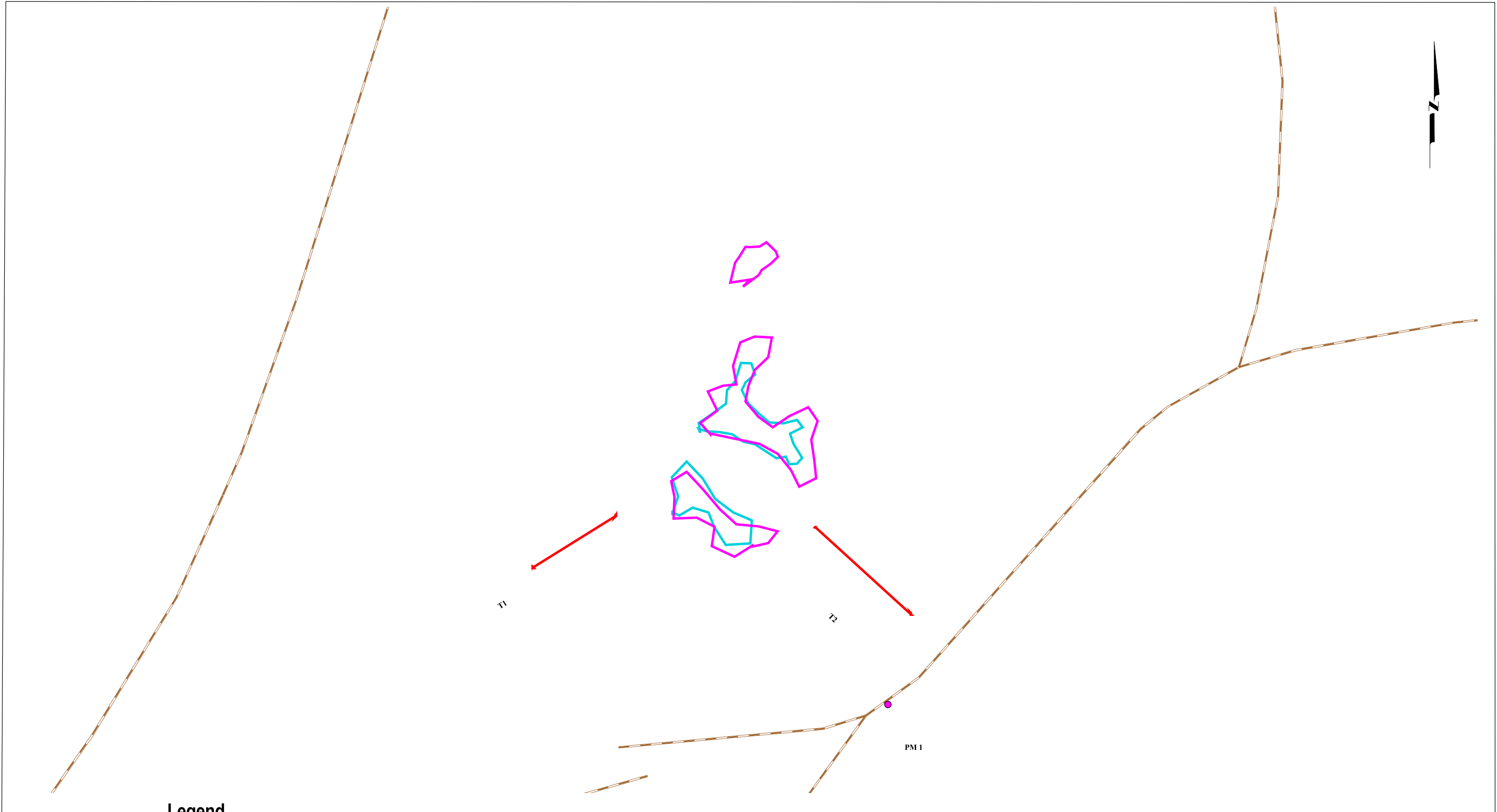
DRAWN
JCF

JOB NUMBER
55074 00121

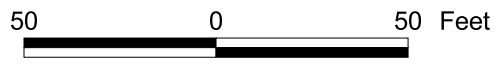
APPROVED

DATE
11/02

REVISED DATE



- Legend**
- Photo Monitoring Point
 - Sampled Transects (2002)
 - January - Total Area .07 acres (3,049 sq. ft)
 - February - Total Area .04 acres (1,742 sq. ft)
 - Trails
 - Boundary

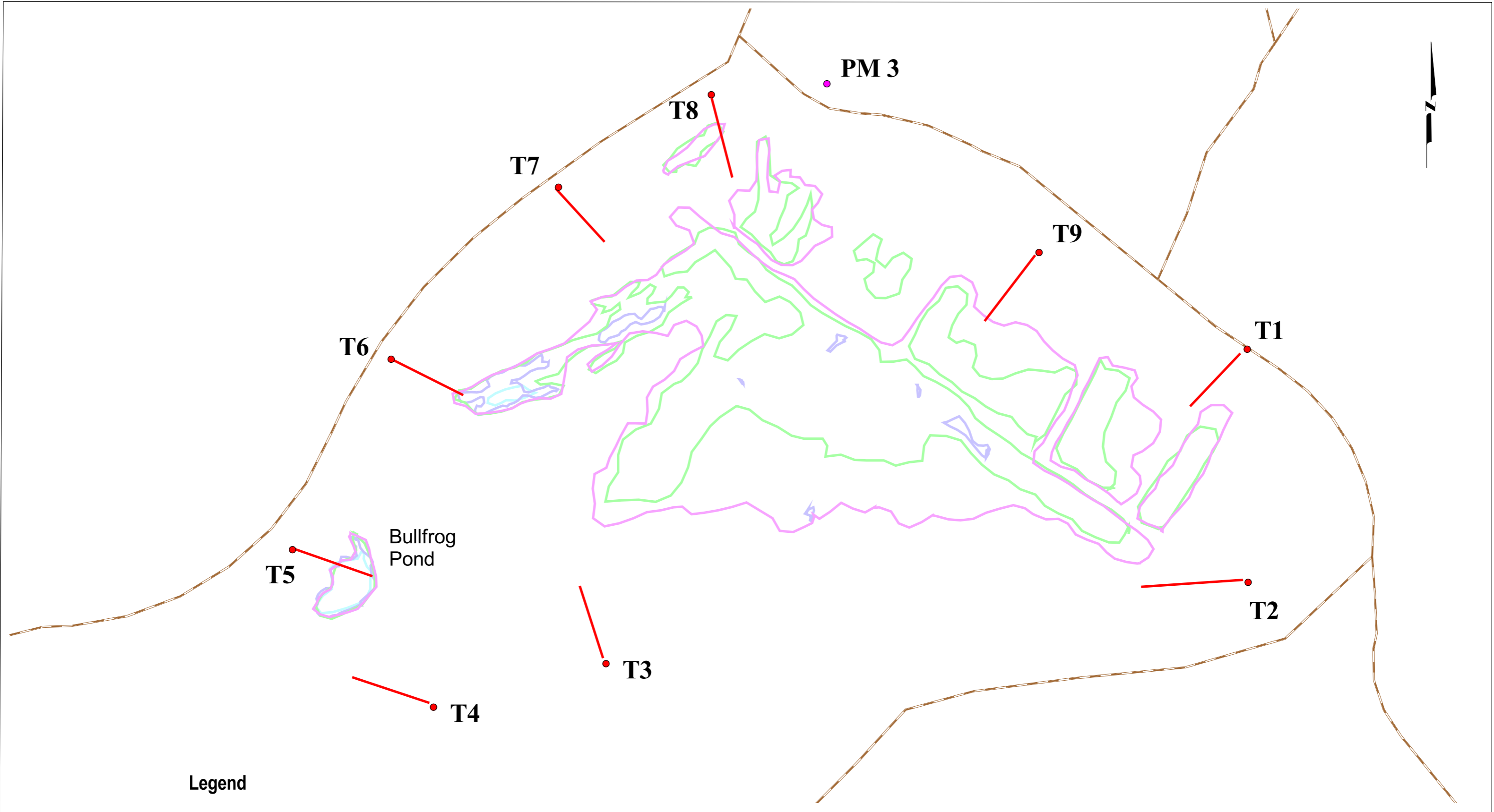


Wetlands Boundaries and Transects - Waterbody 42

2002 Annual Monitoring Report
Former Fort Ord
Monterey County, California

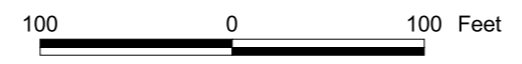
PLATE
11

DRAWN JCF	JOB NUMBER 55074 00121	APPROVED	DATE 11/02	REVISED DATE
--------------	---------------------------	----------	---------------	--------------



Legend

- January 2002 - Total Area 3.57 acres (155,509 sq. ft)
- February 2002 - Total Area 2.10 acres (91,478 sq. ft)
- March 2002 - Total Area .15 acres (6,534 sq. ft)
- April 2002 - Total Area .06 acres (2,614 sq. ft)
- Trails
- Boundary
- Photo Monitoring Point
- Transect Starting Point
- Sampled Transects (2002)



Wetland Boundaries and Transects - Machine Gun Flats

2002 Annual Monitoring Report
Former Fort Ord
Monterey County, California

DRAWN
JCF

JOB NUMBER
55074 00121

APPROVED

DATE
11/02

REVISED DATE

PLATE
12

DISTRIBUTION

2002 Annual Monitoring Report
Biological Baseline Studies and
Follow-up Monitoring
Former Fort Ord
Monterey, California

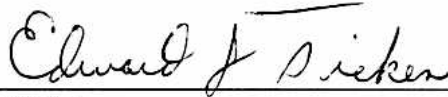
January 28, 2003

Copy No. ____

Copy 1 - 5: Mr. Glen Mitchell
 Department of the Army
 Corps of Engineers
 Sacramento District
 1325 J Street
 Sacramento, California 95814-2922

Copy 6 - 10: MACTEC files

Quality Control Reviewer



Ed Ticken
Principal Environmental Scientist

TAG/KB59504-F-FO