

Figure 42. Mudhen Lake West Transect 1, View Northwest

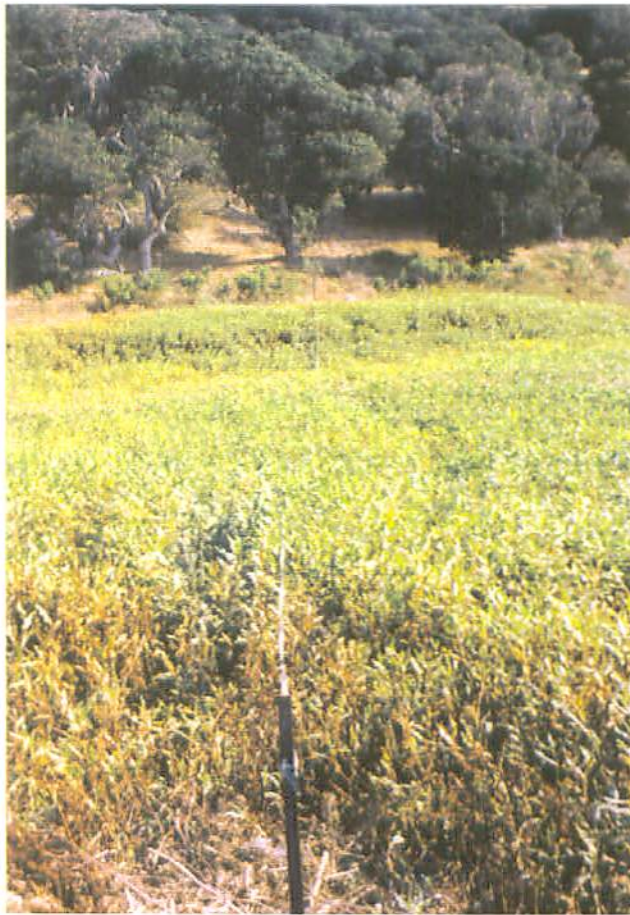


Figure 43. Mudhen Lake East Transect 2, View South



Harding Lawson Associates
Engineering and
Environmental Services

Figures 42 and 43
Representative Wetland Habitats at Wetland Monitoring Sites
1999 Annual Monitoring Report
Former Fort Ord, Monterey County, California

DRAWN
DJP

JOB NUMBER
41355 00271

APPROVED
JC

DATE
12/99

REVISED DATE