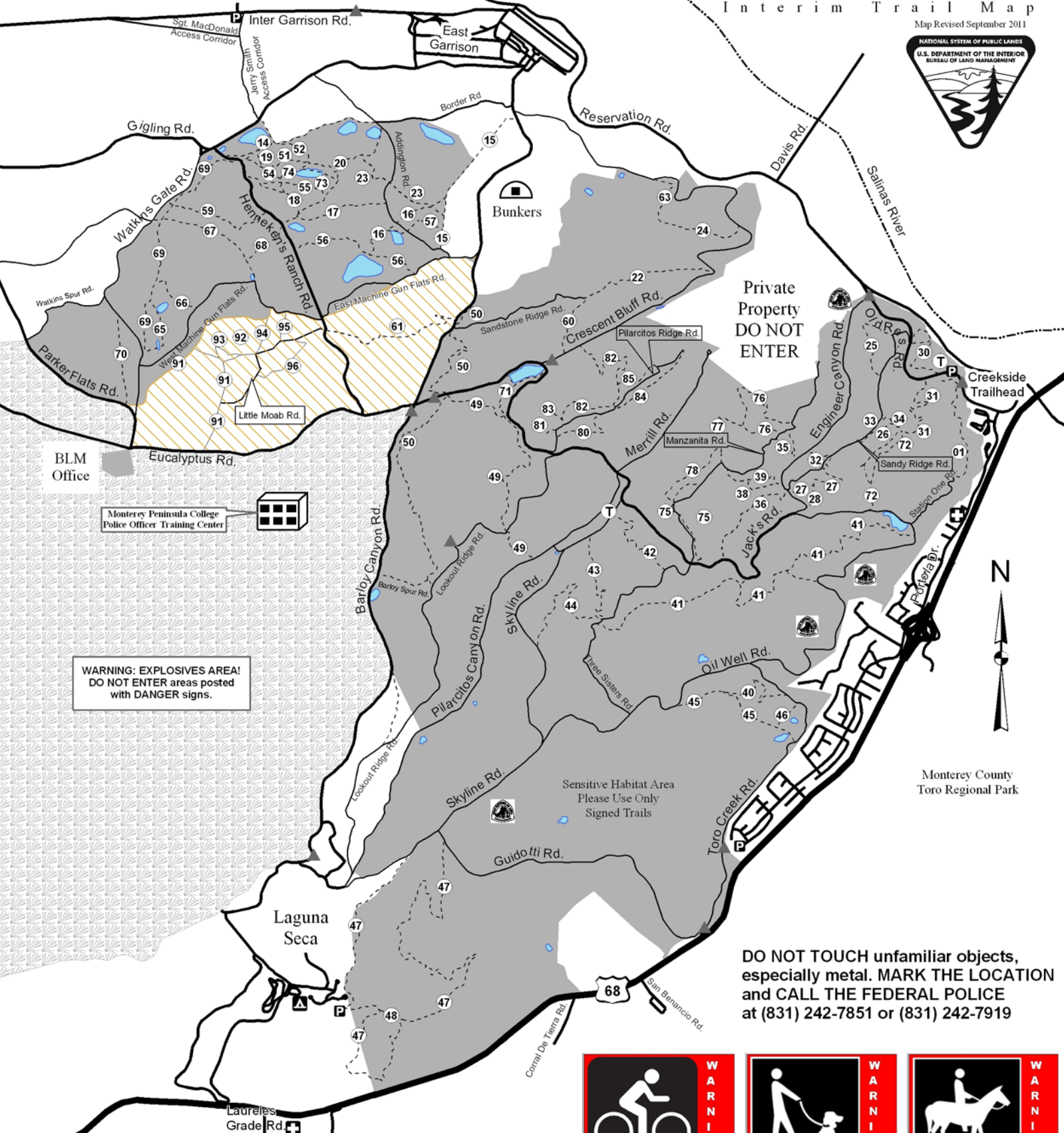


FORT ORD PUBLIC LANDS



Interim Trail Map

Map Revised September 2011



WARNING: EXPLOSIVES AREA!
DO NOT ENTER areas posted with DANGER signs.

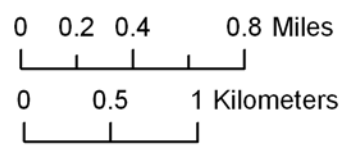
Private Property
DO NOT ENTER



Monterey County
Toro Regional Park

DO NOT TOUCH unfamiliar objects, especially metal. **MARK THE LOCATION** and **CALL THE FEDERAL POLICE** at (831) 242-7851 or (831) 242-7919

- Toilet
- Parking
- Gates
- Fire Station
- Campground
- Paved Roads
- Single Track Trail
- Dirt Roads
- Highway
- BLM Public Lands
- Ponds/Vernal Pools
- Open Army Trails
- Closed Army Lands
- Anza Trail



**W
A
R
N
I
N
G**

We remind our guests on bikes that it is expected etiquette to yield the trail to hikers and equestrians. On narrow trails, bikers may need to come to a complete stop to allow others to pass.



**W
A
R
N
I
N
G**

We strongly encourage pet owners to restrain their animals when other visitors are near, and in parking areas. It is unlawful for dogs to chase sheep and attack wildlife.



**W
A
R
N
I
N
G**

Some trails are not recommended for our equestrian guests due to heavy bike traffic and steep side-slopes. We recommend that equestrians avoid Trail 34, Trail 41 and Trail 49.