

EXPLANATION

GROUND SURFACE CONTOUR
(FEET ABOVE MEAN SEA LEVEL,
CONTOUR INTERVAL 2 FEET)

BUILDING

STORM DRAIN OUTFALL PIPE

FENCE

GLOBAL POSITIONING SYSTEM (GPS) POINT

WATER CATCH BASIN

FENCE POST REFERENCE POINT

TELEPHONE POLE

TELEPHONE LINE

PACIFIC GAS & ELECTRIC POWER LINE

STORM DRAIN LINE

AREA OF SPORADIC SURFACE DEBRIS (WOOD,
METAL PIECES, WHOLE AND BROKEN GLASS AND
COAL); OVERLIES YELLOWISH BROWN TO LIGHT
YELLOWISH BROWN SILTY SAND TO SANDY SILT.
LOCALLY BECOMES DARK YELLOWISH BROWN.

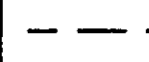
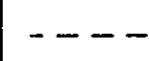
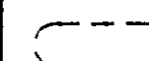
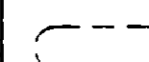
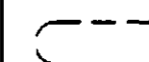
AREA OF COAL DEBRIS LESS THAN 8 INCHES
BELOW GROUND SURFACE (BGS).

AREA OF EXTENSIVE DEBRIS EXTENDING GREATER
THAN 2 FEET BGS; 25%-75% IS GREYISH
BROWN SILTY SAND TO SANDY SILT,
25%-75% IS DEBRIS (BOTTLECAPS, PIECES OF POTTERY
AND METAL, MELTED AND NON-MELTED GLASS PIECES
AND BOTTLES, FORK, GLASS STOPPER)

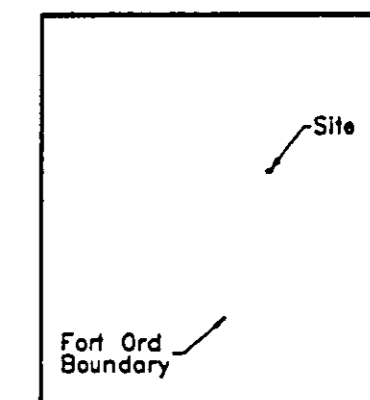
AREA OF MODERATELY EXTENSIVE TO SPORADIC
DEBRIS GENERALLY LESS THAN 8 INCHES BGS; DEBRIS
EXTENDS BELOW 2 FEET BGS IN LOCALIZED AREAS;
90-100% IS DARK YELLOWISH BROWN SILTY SAND
SANDY SILT. 0-10% IS DEBRIS (METAL FRAGMENTS,
WHOLE AND BROKEN BOTTLES, RUSTED CANS, WOOD,
COAL, AND NYLON NETTING).

APPROXIMATE BOUNDARY OF DEBRIS

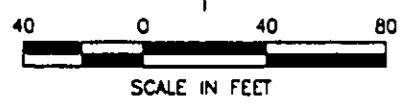
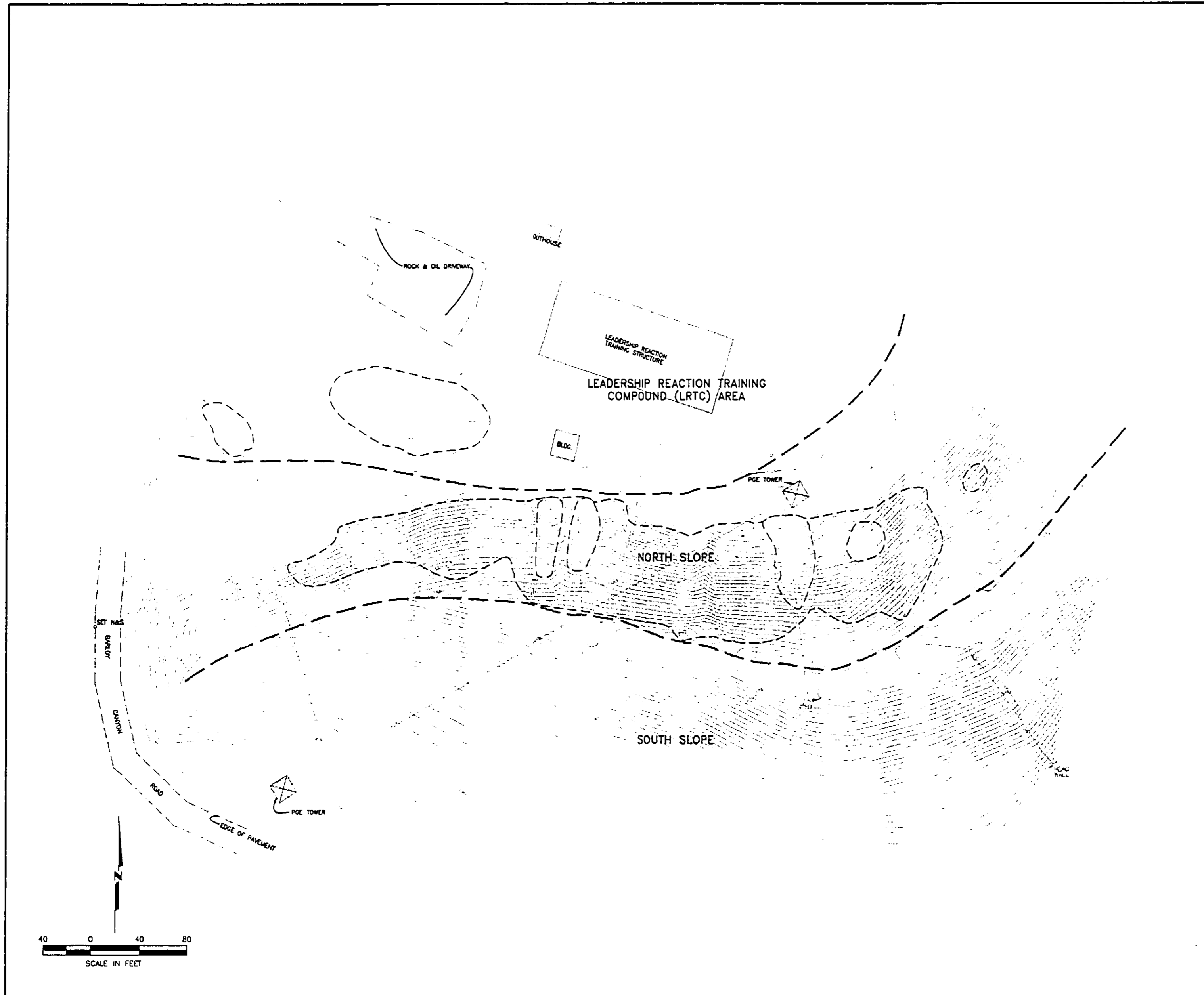
APPROXIMATE AREA BOUNDARY LINE



If this image is not as legible as this overlay, it's due to the poor quality of the original document



KEY MAP



NO.	DATE	REVISIONS	HLA FILE NO.	PROJECT NO.	APPROVED	APPROVAL DATE	DRAWN BY
1	7/94	DRAFT	23366267	23366 04164			WEK
2	12/94	DRAFT FINAL	23366267	23366 041723	MEC	11-22-94	WEK

Harding Lawson Associates
Engineering and Environmental Services

Volume III - Baseline Risk Assessment
Basewide RI/FS
Fort Ord, California

Site Plan
Site 31

PLATE:
6.1