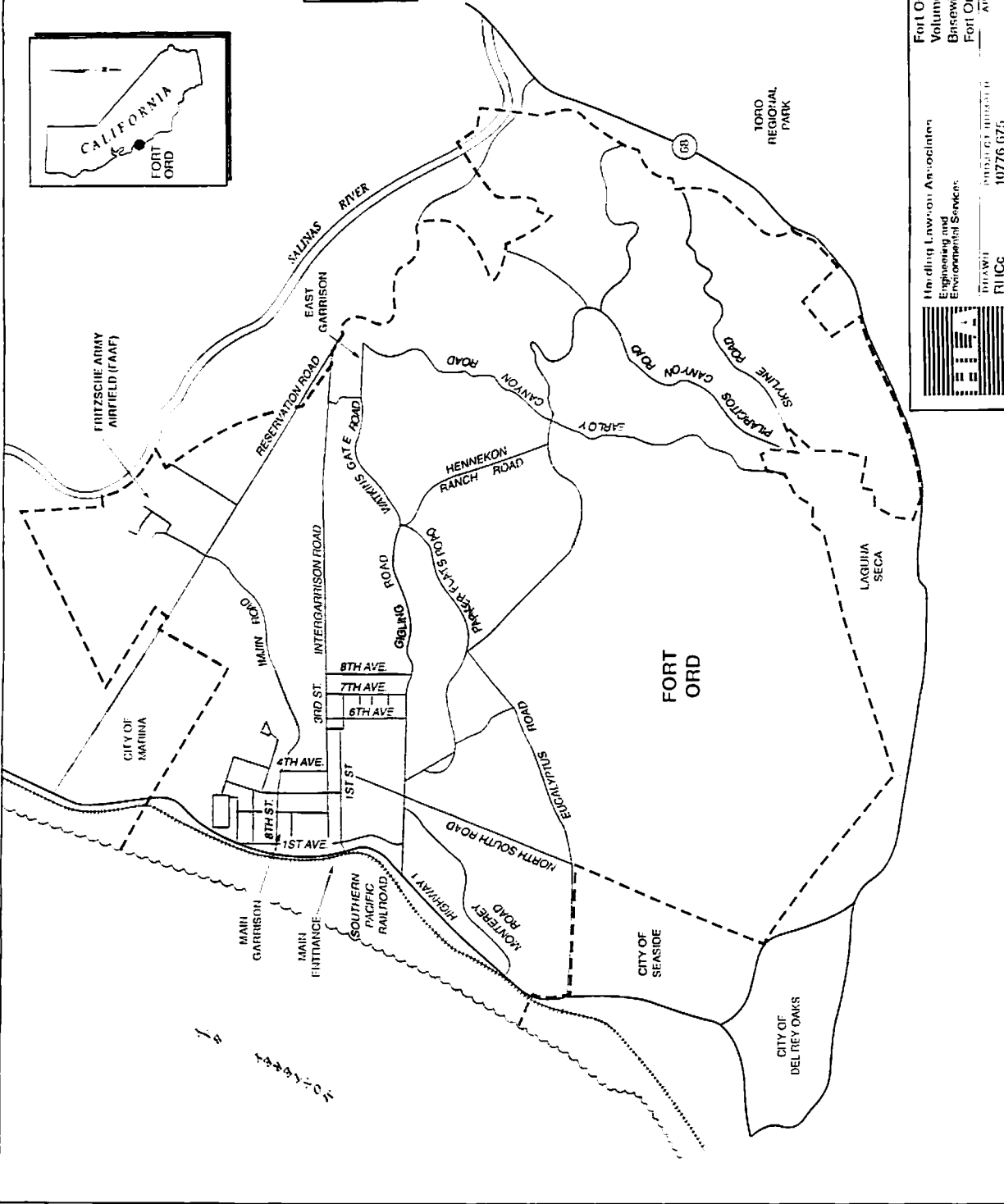
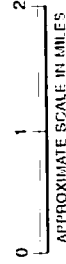

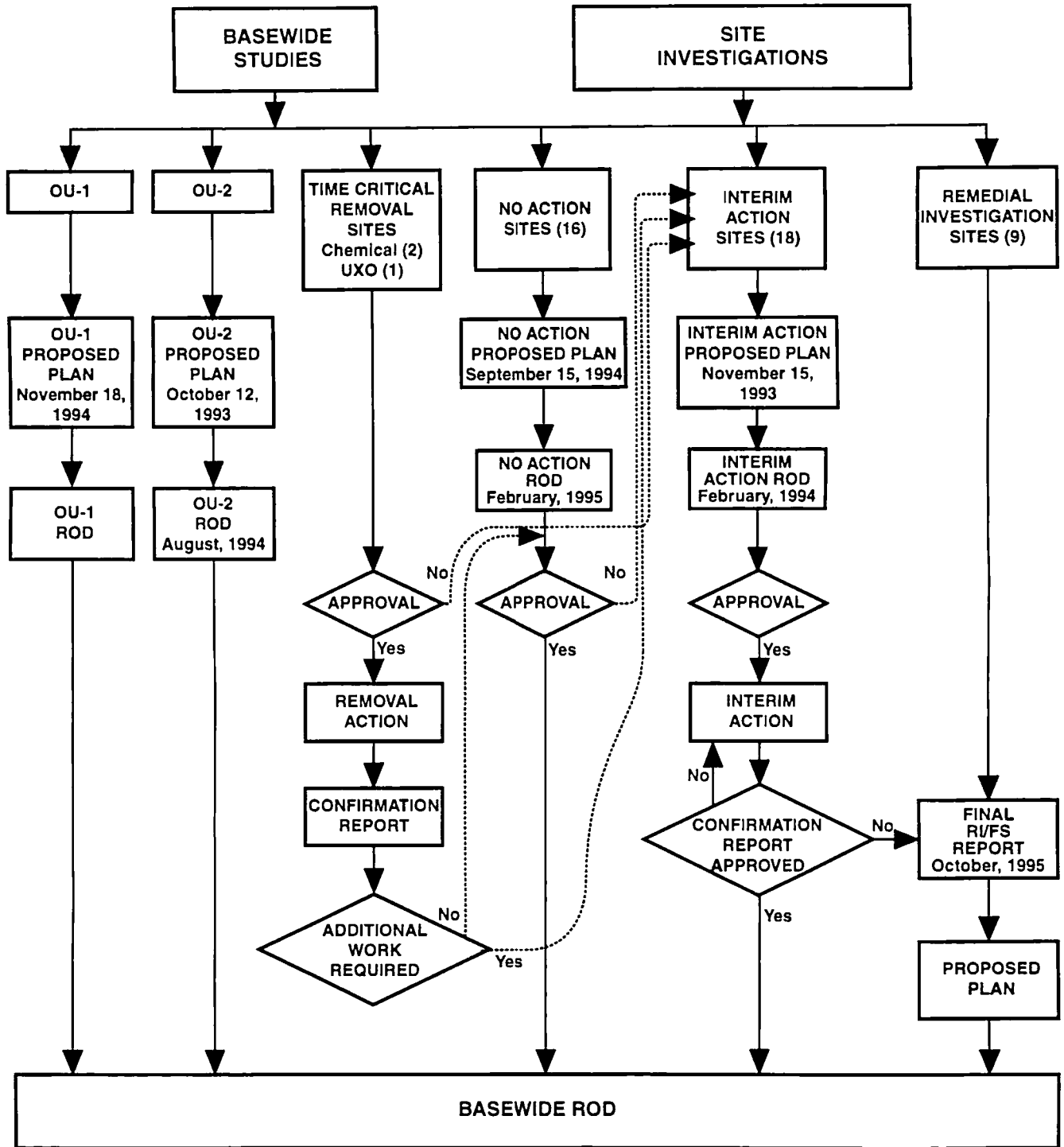


EXPLANATION
 - - - - - Fort Ord Boundary



ON
 10/10/92
 PLATE
1
 Fort Ord Location Map
 Volume I, Background and Executive Summary
 Base-wide RIFS
 Fort Ord, California
 APPROVED BY
 DATE 10/92
 REVISION DATE 10/92
 DRAWN BY
 RUCG
 PROJECT NUMBER
 10776 675
 Handling Lawton Associates
 Engineering and
 Environmental Services


FORT ORD SUPERFUND PROCESS



Note: See Table 1 for a list of Interim Action, No Action, and Remedial Investigation Sites.

101795DJP



Harding Lawson Associates
Engineering and
Environmental Services

Fort Ord Superfund Process
Volume I, Background and Executive Summary
Basewide RI/FS
Fort Ord, California

PLATE

1A

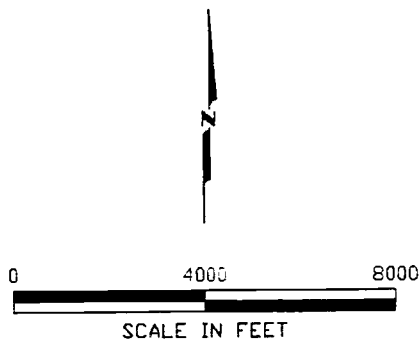
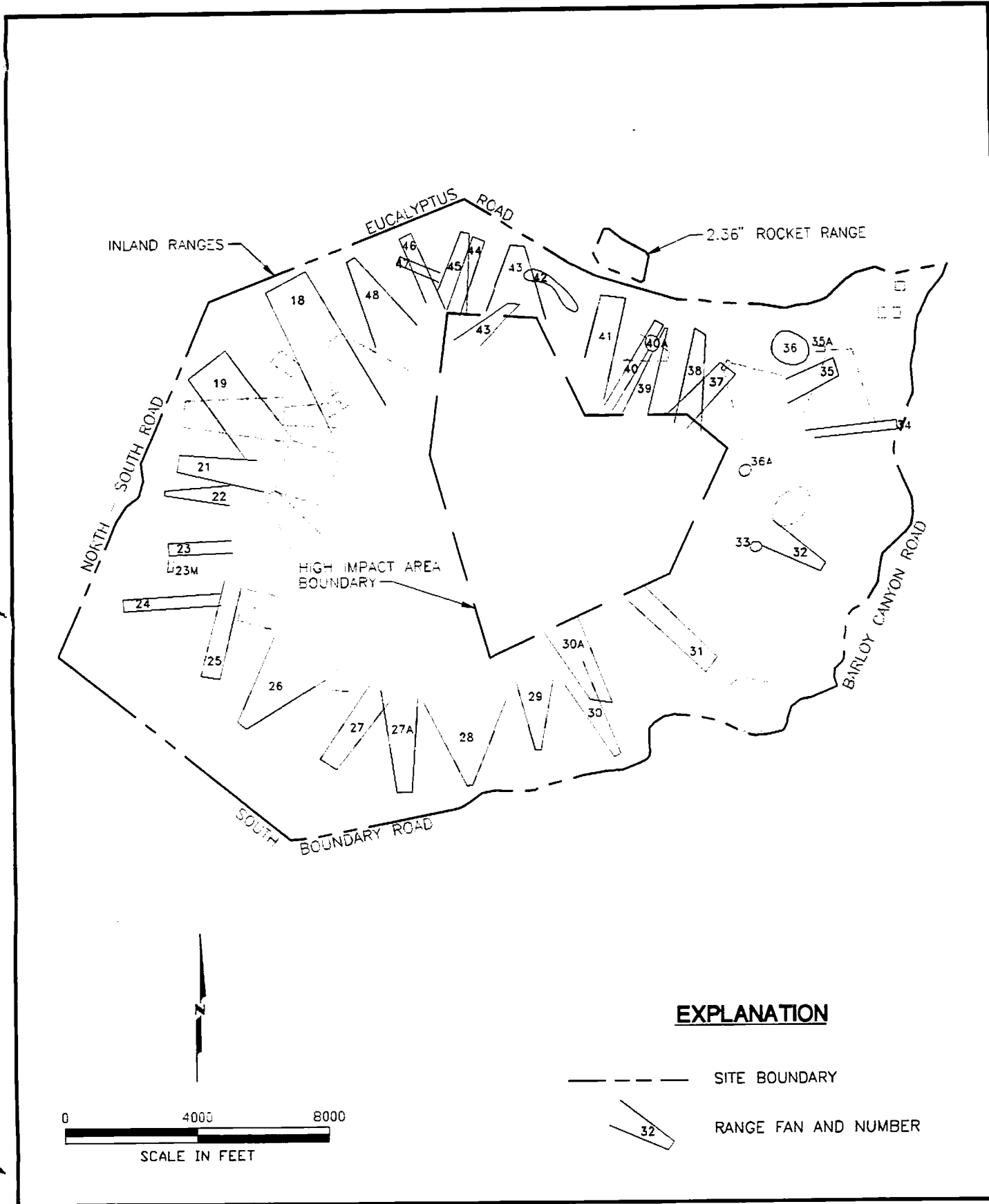
DRAWN
LFDc

JOB NUMBER
23366 041736

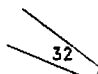
APPROVED
EJT

DATE
12/94

REVISED DATE



EXPLANATION

- SITE BOUNDARY
-  RANGE FAN AND NUMBER

23366495 4000.0
19951002.1524



Harding Lawson Associates
Engineering and
Environmental Services

Site Map, Site 39
Volume 1 - Background and Executive Summary
Basewide RI/FS
Fort Ord, California

PLATE

7

DFAWN
KF

JOB NUMBER
23366 041726

APPROVED
E. J. J.

DATE
12/94

REVISED DATE
10/95