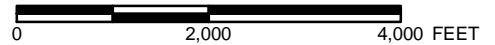
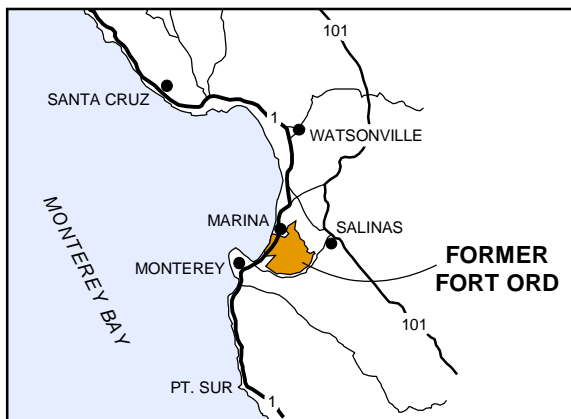
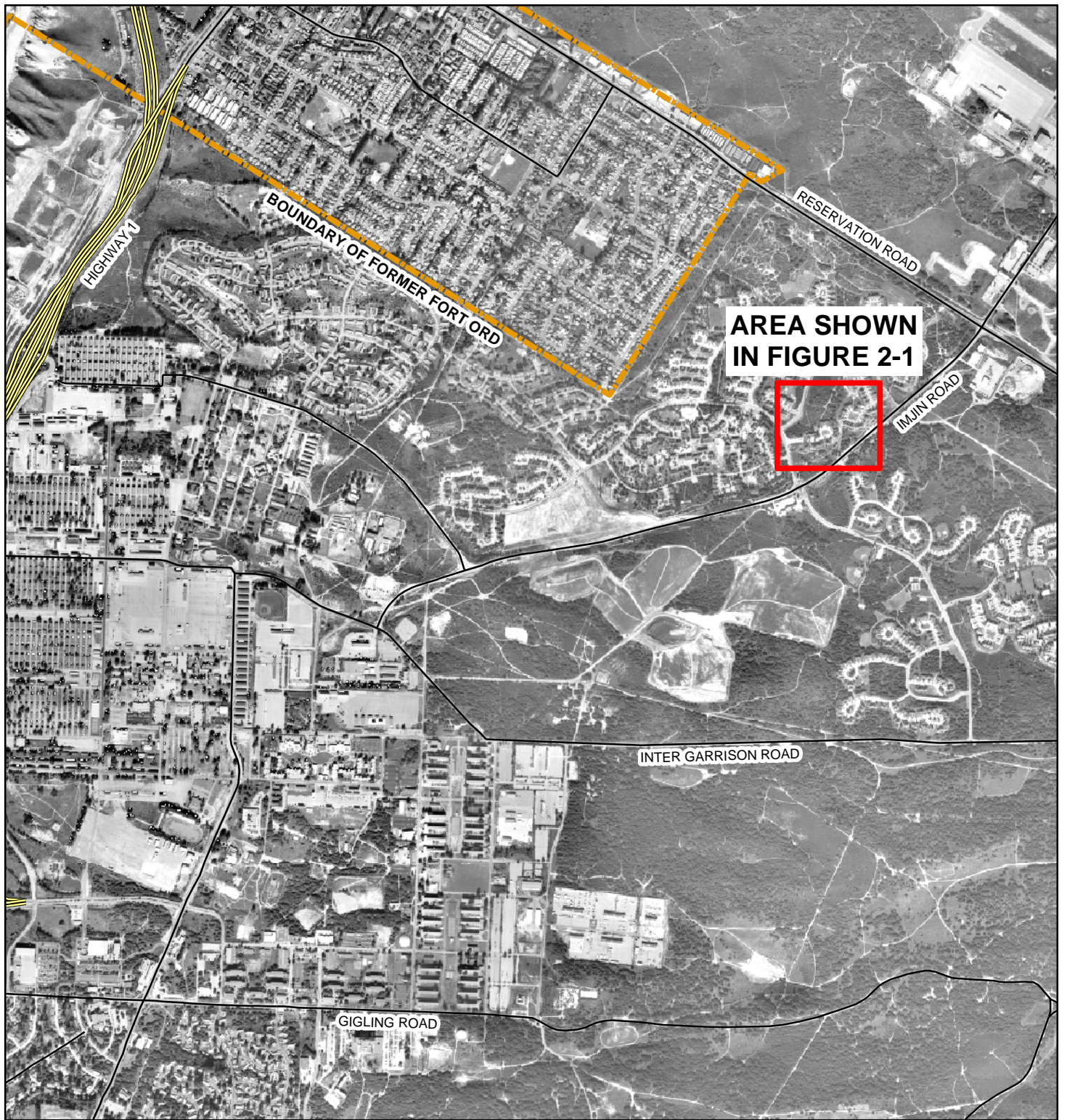
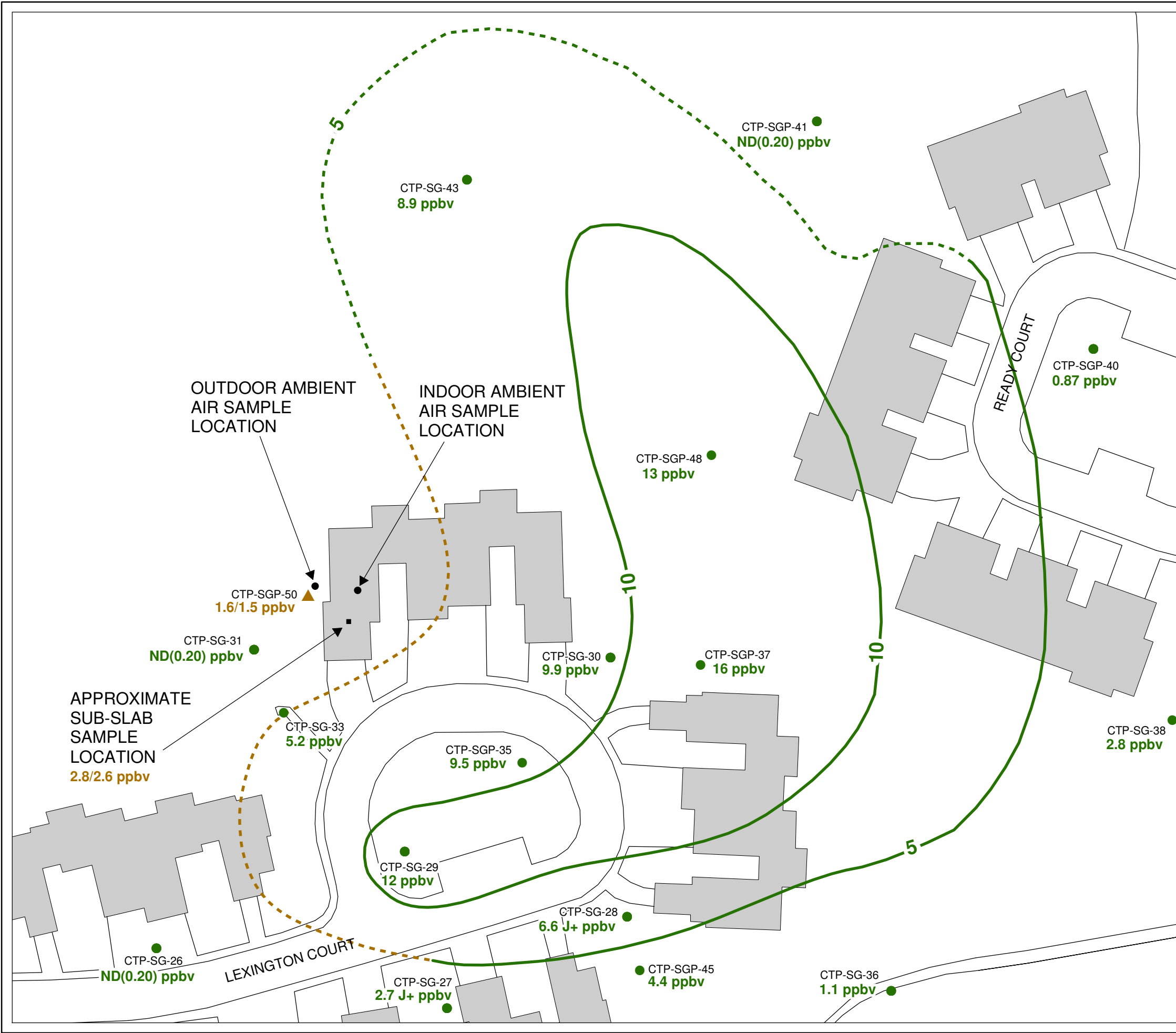


Figures



REVISION	DATE	DESCRIPTION	CHKD	APPR
Shaw Environmental, Inc.			Department of the Army Sacramento District, Corps of Engineers Sacramento, California	
DESIGNED: P. KELSALL		Figure 1-1 LOCATION MAP INDOOR AIR SAMPLING LEXINGTON COURT Former Fort Ord, California		
DRAWN: K. BLACK				
CHECKED: P. KELSALL				
SUBMITTED:		DATE	SCALE: SHEET	SPEC. No. FILE No. Indoor Location.mxd

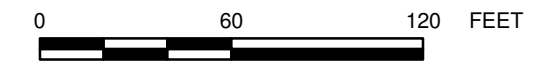


LEGEND

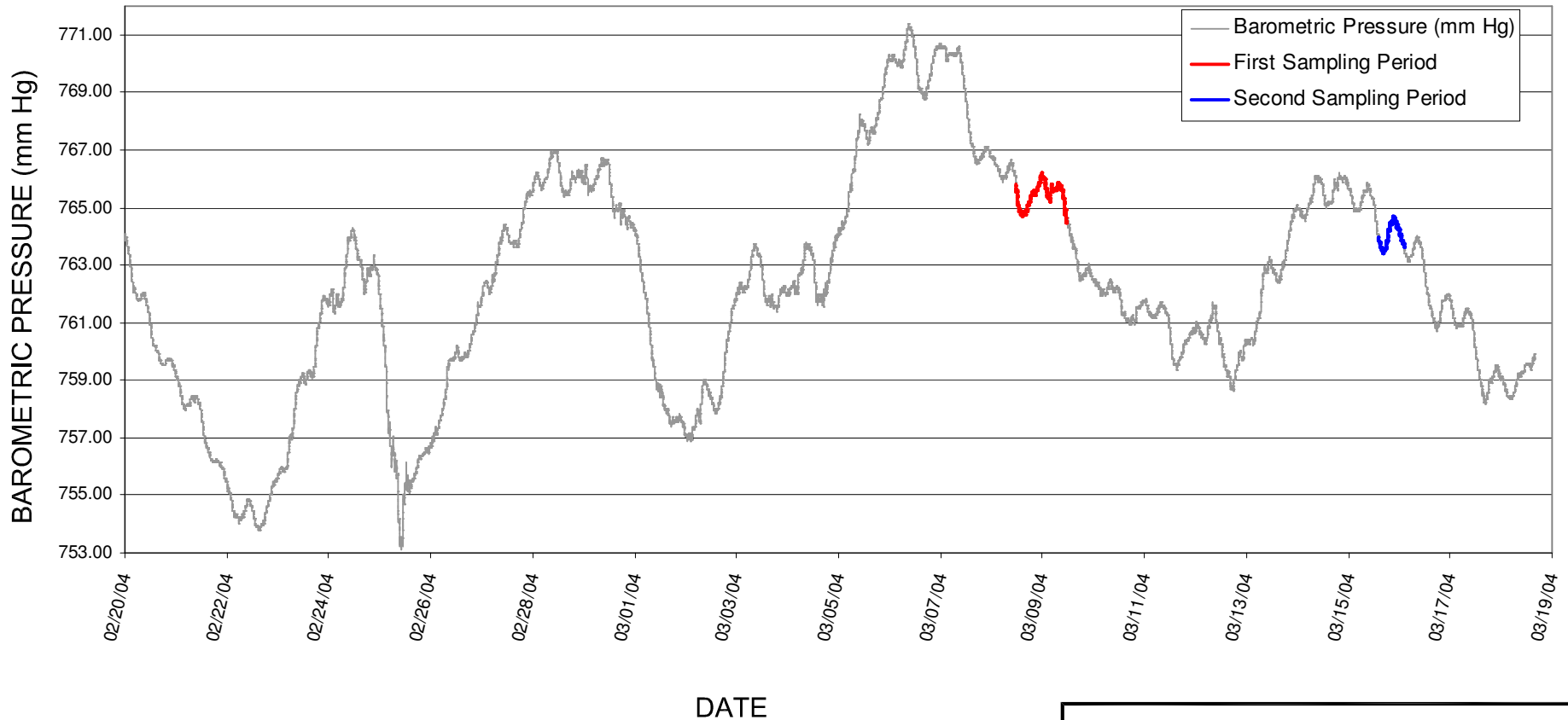
- 6-FT. PROBE SAMPLED MARCH 2004 (SHAW)
- 6-FT. PROBE SAMPLED MARCH-JUNE 2003 (MACTEC)
- CARBON TETRACHLORIDE CONCENTRATION 3/9/04
1.6/1.5 ppbv
- CARBON TETRACHLORIDE CONCENTRATION 3/15/04
1.1 ppbv
- CARBON TETRACHLORIDE CONCENTRATION CONTOURS AT 6-FT. DEPTH (ppbv); DASHED WHERE INFERRED (CONTOURS DEVELOPED BY MACTEC, 2003)
- CONTOUR ADJUSTED BY SHAW FOR MOST RECENT DATA
- BUILDING


NOTES

ppbv = parts per billion volume
J+ = lab qualifier (estimated value)



REVISION	DATE	DESCRIPTION	CHKD	APPR
Shaw Environmental, Inc.		Department of the Army Sacramento District, Corps of Engineers Sacramento, California		
DESIGNED: E. SCHMIDT		Figure 2-1 INDOOR SAMPLING SITE MAP LEXINGTON COURT Former Fort Ord, California		
DRAWN: K. BLACK				
CHECKED: P. KELSALL				
SUBMITTED:	DATE	SCALE:	SPEC. No.	
		SHEET	FILE No. CTPsite2.mxd	



REVISION	DATE	DESCRIPTION	CHKD	APPR
		DEPARTMENT OF THE ARMY SACRAMENTO DISTRICT, CORPS OF ENGINEERS SACRAMENTO, CALIFORNIA		
DESIGNED: E. SCHMIDT		FIGURE 2-2 BAROMETRIC PRESSURE PLOT CARBON TETRACHLORIDE INDOOR AIR SAMPLING FORMER FORT ORD, CALIFORNIA		
DRAWN: K. BLACK				
CHECKED: P. KELSALL				
SUBMITTED:				
DATE APPROVED:		SCALE: SHEET	SPEC. No. FILE No.	
_____		-	783751SJ-A143	